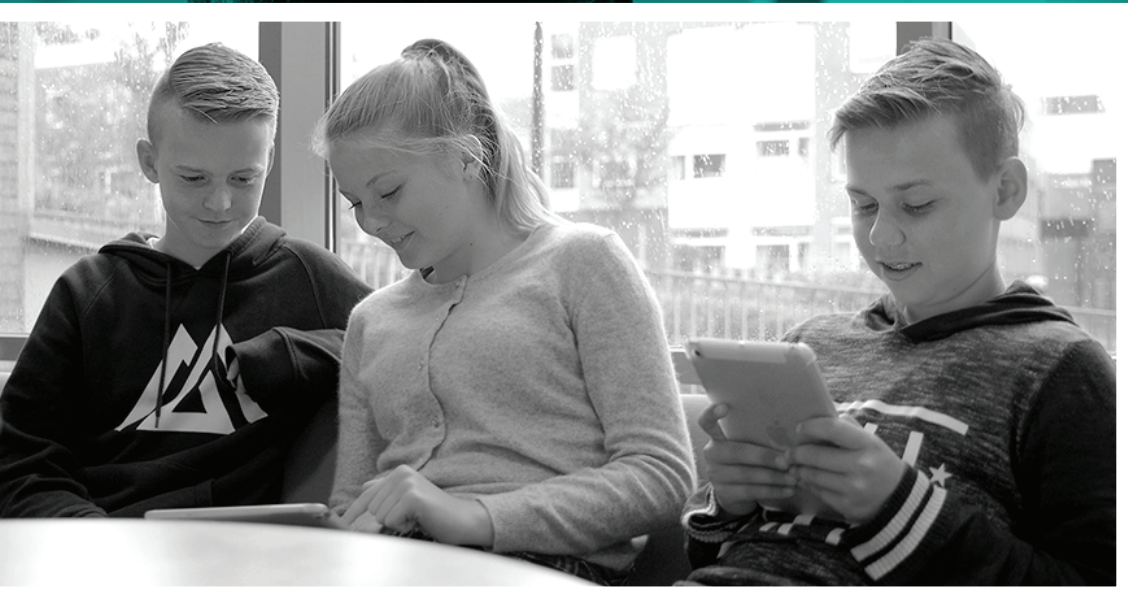


# STRATEGY 2020-2030:

## Department of Education (IPED)



## AMBITION

- IPED's ambition is to be a national premier provider of research-based knowledge about education, training, knowledge building, work-life learning and growing up in a sustainable society. We will contribute to society's general acquisition of knowledge, to professional renewal and solutions to key challenges in a society with an increasing degree of complexity and digitalization.
- To realize our ambition, we will carry out high quality scientific research and facilitate our research groups' ability to participate in high standing international networks. We will develop student-active learning environments characterized by innovation and integrated use of digital media so that our studies appear attractive and relevant to both national and international students. We will facilitate good forms of collaboration between professional and technical-administrative employees in order to meet future challenges in research and education.
- IPED employees will actively participate in the public debate regarding relevant topics and work to make our research known to the general public and relevant groups. The department will work to increase our competencies in communication about research.

## RESEARCH

- By 2030, IPED will be a key player in national and international educational science research. Our research portfolio will be characterized by theory development, methodological innovation and robust empirical research.
- Our research, in cooperation with international partners, will be at the forefront of research in their fields. An emphasis will be placed on design, methodology and theory development and interdisciplinary research of high relevance to Norwegian society. Particular emphasis will be placed on longitudinal studies, further development of quantitative, qualitative and analytical methods, as well as design and intervention studies with the use of new technological applications.
- IPED wants to be at the forefront of research infrastructure and digitalization, as well as the development of technological applications for data collections and data management that meet the privacy requirements. IPED's lab, EngageLab, will be more closely linked to our research strategy and will have an overall responsibility in this privacy development.
- A consistent theme for our research efforts will be learning throughout the course of life. Our research covers the age range from early childhood to working life and adult learning. Other key topics will be digital upbringing, work life learning, child and youth learning, development and inclusion, educational policy, educational history, and the importance of education in a time of transformation and major societal changes.
- As a department, IPED represents a pedagogical-professional breadth that gives us a unique position when it comes to interdisciplinary research and understanding of what this entails. We will continue to manage and develop this breadth, both internally and in collaboration with our research partners.



## EDUCATION

- It is IPED's ambition to offer the best study of pedagogy and educational science in the country. All of our study programs are research based.
- Through our study programs, we will equip our students for the future labor market and the skills needed in society. We will further develop the internship component in our studies in collaboration with the work force and internship field, both in the private and public sector.
- We will work strategically to develop and quality assure our study programs and learning environments with a plan to recruit more students with stronger educational backgrounds and the motivation to complete the program. We will ensure high program quality and consistency in our teaching.
- Beginning in 2022, a new international master program will be implemented with a relevant profile for the recruitment of international students, primarily from Europe. This master's program will positively complement the rest of the study portfolio at the department.
- Our study programs will be perceived as relevant to society and thus appear attractive to future students and create better conditions for successful completion and well-being of the learning environment.
- We will use and analyze available data regarding our students and their learning in order to counteract dropout and to enhance the overall program quality. Resource analysis of the study programs will be an important basis for the further development of the programs' competency profile in coming period.

